

Outdoor Tap Coin WiFi

Model: WIFI-A505



“Outdoor Tap Coin WiFi” (WiFi Vending Machine) brings a brand-new vending business into public market. It provides visitors an immediate WiFi Internet hotspot service **charged by time or traffic data**.

Everyone has a smartphone, but not everywhere have WiFi. WiFi Vending Machine can **fill this huge gap** between WiFi needs and WiFi coverage and offer you a new way to **gain revenue easily**.

The machine is **plug-&-play** and easy to install. And the best part is all investment can be **returned in 3 months**.

FUNCTIONS

- No inquiry, no username, and no password are required; just **tap** the phone, insert **coins**, and get **WiFi**.
- Provide **big WiFi signal range** (around 100 meters for outdoor / 30 meters for indoor).
- Support around **50 concurrent users** (depending on the bandwidth of Internet access) and optional high-end version can support up to 500 concurrent users.
- No need for supervision. **Self-service** working method to save labor cost.
- Provide user-friendly **pop-up instruction page** to tell end users how to get WiFi service.

MaxComm

- Excellent **coin-learning ability** to recognize your local coins and discriminate fake coins.
- Offer **cloud-based NMS** (Network Management System) to monitor all online machines remotely.
- Support **account roaming** between different machines to help end users enjoy your WiFi service in multiple sites.
- Professional coin passage design to **prevent coin stolen or fraud**.

MaxComm

What do You Need to Prepare?

ONLY INTERNET & POWER SUPPLY



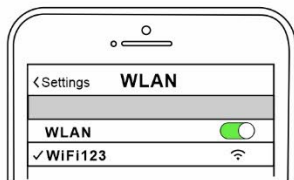
**1. Connect Internet Cable
or Insert 4G SIM Card (optional)**



2. Plug in the Machine

How to Get WiFi Service?

ONLY 3 STEPS



**1. Switch on WiFi & Connect
Machine's WiFi Name**



2. Tap Your Phone



3. Insert Coins

Compatible with All WiFi-Enabled Devices

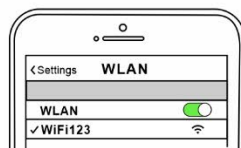


Top-up via Voucher Code

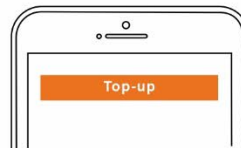
(especially for users with laptop/PC or for long-term WiFi connection)



**1. Generate Voucher
Codes in NMS &
sell to Users**



**2. Connect Machine's
WiFi Name**



3. Click "Top-up" Button



**4. Enter the Voucher
Code & Click OK**

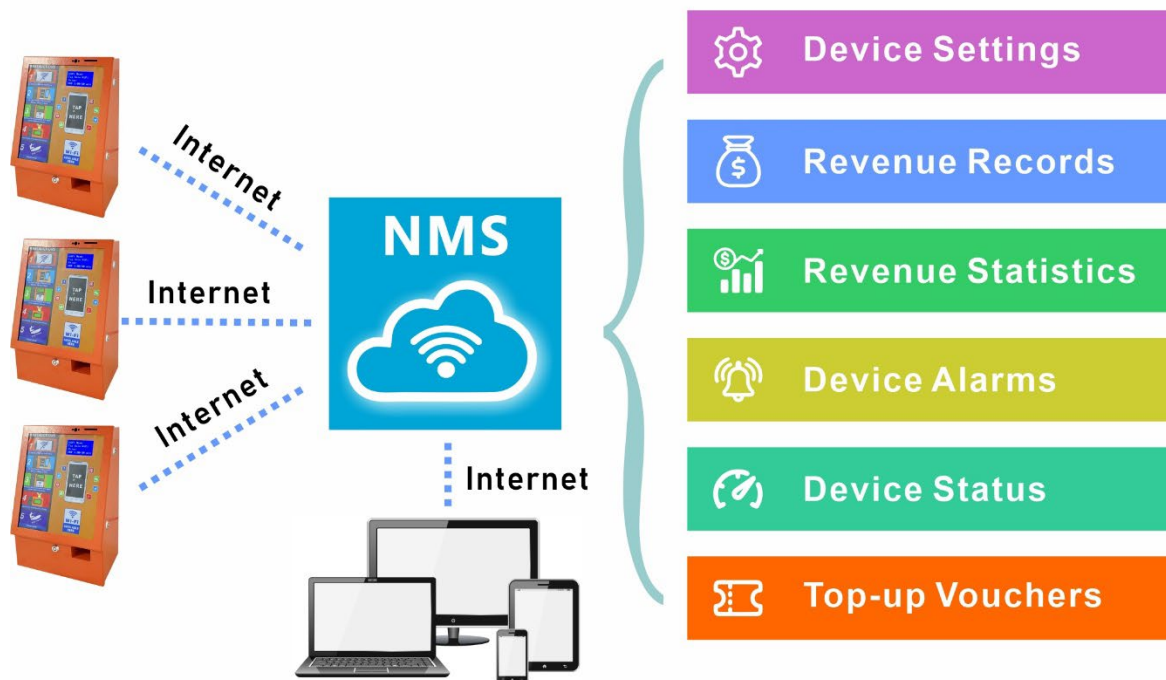
FEATURES

WiFi Range: 30 (indoor) / 100 (outdoor) meters
50 Concurrent Users



- * WiFi signal range will vary with actual installation environment.
- * Number of supported concurrent users depends on the bandwidth of Internet access.
- * High-end version of machine can support up to 500 concurrent users.

Cloud NMS: Easy Management Platform



MaxComm

BENEFITS

- Venue owners can **get extra revenue** by providing WiFi hotspot service and attract more visitors which is good for his original business.
- Venue owners can **display advertisements** for their products on the login page for better promotion, or show ads for other shops to get income.

MaxComm

- **No WiFi squatter or hacker to stole Internet** because no username and password is required.
- Travelers can get **quick and cheap Internet access** without paying expensive charge for data roaming or new SIM card.
- Visitors can check/send email, browse websites, and watch videos from **any WiFi-enabled** smart mobile phone, tablet, laptop, or handheld device.

APPLICATION

Suited for **indoor or storefront public environment**, such as:

- **Long-stay place:** dormitories, apartments, hotels, hospitals.
- **Crowed public place:** stations, food centers, restaurants, coffee shops, pubs, lounge bars, Karaoke bars, beauty salons, chain shops, lobby of banks/hotels.
- **Sports area and recreation centers:** gyms, bowling, billiards.
- **Tourism place:** international airports, beaches, parks, swimming pools, exhibition and convention sites.

MaxComm



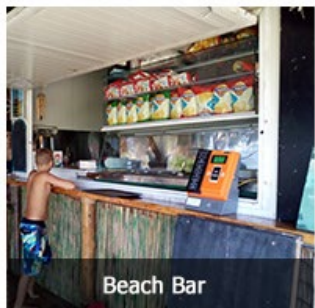
Bus/Railway Station



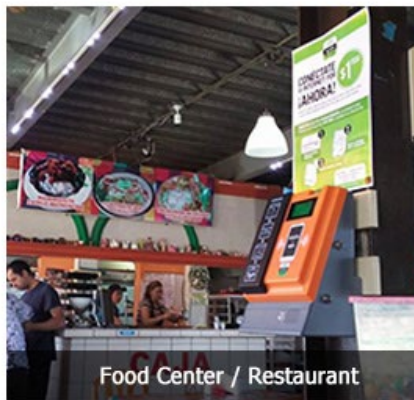
Store / Retail Shop



Laundry



Beach Bar



Food Center / Restaurant



Dormitory / Apartment



School / University



Hospital / Bank / Airport

OPTIONAL ADD-ONS

Cellphone Charging Box



- Can get extra income by selling power charging service
- Input Voltage: AC100-240V 50/60Hz
- Output Voltage: DC5V
- Output Current: 2A
- Charging Cable: 4 x 1 meter
- Connector Type: IOS + Micro USB + Type C, 3 in 1
- Casing Material: ABS plastic
- Dimensions: 222mm (L) x 146mm (W) x 56 mm (H)
- Weight: 0.9 kg

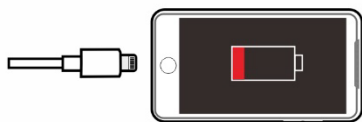
How to Buy Charging Time?

3 Types of Connectors Available:

 for Android (micro USB)

 for Android (Type C)

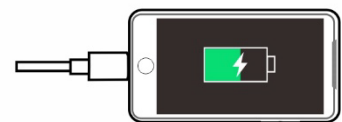
 for Apple



1. Connect Charging Cable



2. Insert Coins



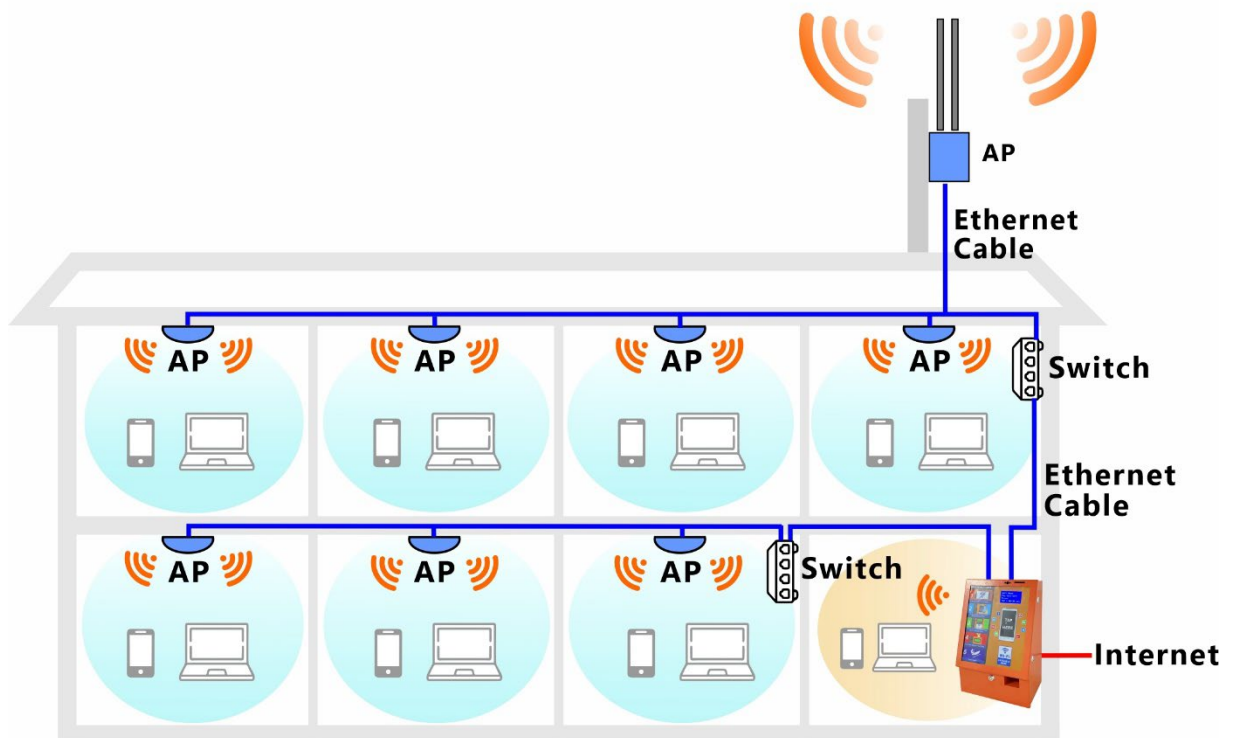
3. Start Charging

Access Point (WiFi Extender)



- Can extend the wifi signal range to attract more users
- Work in dual-band: 2.4 & 5.8 GHz
- Support PoE in
- Provided with waterproof casing
- Shall connect to machine via Ethernet cable
- Approximate extended range: around 120 meters (outdoor) / 50 meters (indoor)
- Dimensions: 358mm (H) x 85 mm (W) x 45mm (D)
- Weight: 0.2 kg

How to Extend WiFi Coverage via AP?



WiFi Coverage Extended for Multi-Story Building

TECHNICAL SPECIFICATIONS

Environmental Conditions	<ul style="list-style-type: none">- Temperature: 5°C to 45°C (operation) / -10°C to 60°C (storage)- Humidity: 10% ~ 85% non-condensing- Shall work in bright environment
Power Requirement	<ul style="list-style-type: none">- External adaptor (input: 100-240 VAC, 50/60 Hz / output: 12-24VDC, 0.8A)- Power consumption: 6 watts- Support solar power supply
WiFi Operation Range	Radius up to 100 meters (outdoor) / 30 meters (indoor)
WiFi Frequency Range	Dual-Band: 2.412 to 2.484 GHz and 5.150 to 5.875 GHz
Supported 4G Frequency Bands (optional)	LTE FDD: 700/800/850/900/1700/1800/1900/2100/2600MHz
Supported Max. 4G Data Speed (optional)	LTE FDD: Cat4 Download: 150Mbps / Upload: 50Mbps @20M BW
Supported Device for Tapping	Any WiFi-enabled mobile phone, tablet, laptop, PSP, PDA, etc.
Networking	<ul style="list-style-type: none">- IEEE 802.11 b/g/n and 802.11 a/n/ac Wireless LAN- Zero end-user configurations
Authentication	Built-in user authentication and accounting
Remote Management via NMS (optional)	<ul style="list-style-type: none">- Setting of WiFi name, WiFi service price, data speed limit- Revenue records of WiFi Internet service- Offer voucher codes for long-term wifi service- Supervision on running status of each machine
About Coins	<ul style="list-style-type: none">- Coin Acceptance: 15 different types- Usable Coins: Diameter: 16mm ~ 31mm, Thickness: 1.2mm ~ 3.2mm- Coin Box Capacity: 1.8 liters
Supported Language	English, Spanish, Portuguese, Russian, French, and Thai are available (other languages can be customized)
Structural	<ul style="list-style-type: none">- Housing Material: Cold rolled iron plate

T : +886282287758

6F., No.120-12, Sec.3, Zhongshan Rd., Zhonghe Dist, New Taipei City 235, Taiwan <https://www.4gltecpe.com>

MaxComm

- WAN Interface: 1x RJ45 port or built-in 4G module (optional)
- Antennas: 1x WiFi (internal) or 1x 4G (external, optional)
- LCD: 4-line, 128X64 pixels, backlight supported, shock resistance $\geq 4,000\text{N}$
- Dimensions: 383mm (H) X 250mm (W) X 170mm (D)
- Weight: 5.7 kg
- Packing Dimensions: 455mm (L) X 315mm (W) x 220mm (H)
- Packing Weight: 7 kg

Know more about us at:

<https://www.wifibrother.com>

<https://solnetcom.en.alibaba.com>

<https://www.youtube.com/c/WiFiBrother>

<https://www.facebook.com/wifibrother/>

Doc No.: SOL-Hotspot-Datasheet22100913

Doc No.: SOL-Hotspot-Datasheet11122903

T : +886282287758

6F., No.120-12, Sec.3, Zhongshan Rd., Zhonghe Dist, New Taipei City 235,
Taiwan <https://www.4gltecpe.com>